



Automation System Provider – for CNC Machines

Worldwide



Products Catalogue

CONTENT

1 Stocker	2
2 Conveyor	3
3 Washing & Drying Machine	4
4 Brushing & Buffing Machine	5
5 Deburring Machine	6
6 Grinding Machine	7
7 Inverting Unit	8
8 Fixture	9
9 Oilmist Atomizer	10
10 Controller & Touch Screen	12
11 Remote Service System	13
12 Intelligent Management System	13
13 Wireless Master Module	14
14 Wireless Remote Module	14
15 Application – Wireless System	15
16 Robot, Gantry & Track Motion System	16
17 Application - Robot	17
18 Application - Gantry & Track Motion System	18
19 Integration with Worldclass CNC Machines	19



Lifting Rotary Stocker



Model		ARS-01
Pallet Quantity		4~10 Pallets
Stock Quantity		Max. 100 work pieces
Drive Type	Drive	Geared Drive
	Up/Down	Chain
Control Unit		Siemens / Omron / Mitsubishi
Power		AC 220V ± 10%, 50Hz

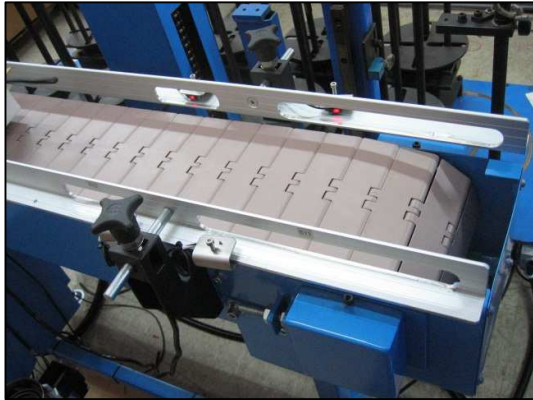
Lifting Rotary Stocker



Model		ARS-02
Pallet Quantity		User Specified
Stock Quantity		User Specified
Drive Type	Drive	Geared Drive
	Up/Down	NIL
Control Unit		Siemens / Omron / Mitsubishi
Power		AC 220V ± 10%, 50Hz

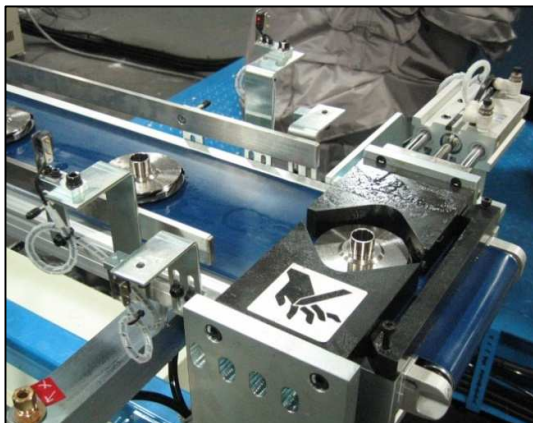


Flexi-link Conveyor



Model	ACY-01	
Conveyor Length	1,000 ~ 3,000 mm	
Conveyor Width	200 ~ 500 mm	
Drive Type	Drive	Geared Drive
	Lock	Nil
Control Unit	Siemens / Omron / Mitsubishi	
Power	AC 220V ± 10%, 50Hz	

Belt Conveyor



Model	ACY-02	
Conveyor Length	1,000 ~ 3,000 mm	
Conveyor Width	200 ~ 500 mm	
Drive Type	Drive	Geared Drive
	Lock	Pneumatic
Control Unit	Siemens / Omron / Mitsubishi	
Power	AC 220V ± 10%, 50Hz	



Roller Conveyor



Model		ACY-03
Conveyor Length		1,000 ~ 10,000 mm
Conveyor Width		200 ~ 500 mm
Drive Type	Drive	Geared Drive
	Lock	Nil
Control Unit		Siemens / Omron / Mitsubishi
Power		AC 220V ± 10%, 50Hz

Hot Water Washing & Drying Machine



Model		AWS-01
Cleaning Method	Spray	Hot Water / Pressurized
	Dry	Heater / Air Spraying
Control Unit		Siemens / Omron / Mitsubishi
Features		Auto Drain Dirty Water
Power		AC 220V ± 10%, 50Hz



Solvent Washing & Drying Machine



Model	AWS-02	
Cleaning Method	Spray	High Pressured Solvent
	Dry	Air Spraying
Control Unit	Siemens / Omron / Mitsubishi	
Handler	Robot	
Power	AC 220V ± 10%, 50Hz	

Brushing Machine



Model	ABM-01	
Drive Type	Variable Speed	
Brush Material	PVC, Nylon, Wire Brush, etc	
Control Unit	Siemens / Omron / Mitsubishi	
Power	AC 220V ± 10%, 50Hz	



3-Axis Buffing Machine



Model	ABM-03	
Buffing Spindle	Drive	Induction / Servo
	Type	Brush
Work Piece Holder	XY Table	
Control Unit	IAI / Delta /Mitsubishi	
Power	AC200V, 3 phase, 50Hz	

Deburring Machine



Model	ADM-01	
Brushing Spindle	Drive	Variable Speed
	Type	PVC Brush - Air Motor
Work Piece Holder	Rotary Table with Chuck	
Brush Material	PVC, Nylon, Wire Brush	
Control Unit	Siemens / Omron / Mitsubishi	
Power	AC 220V ± 10%, 50Hz	



Robot Deburring Machine



Model	ADM-02	
Deburring Spindle	Drive	Variable Speed
	Type	Grinding Tool - Air Motor
Work Piece Holder 工件夹具	Rotary Table with Chuck	
Control Unit	Robot	
Power	AC 220V ± 10%, 50Hz	

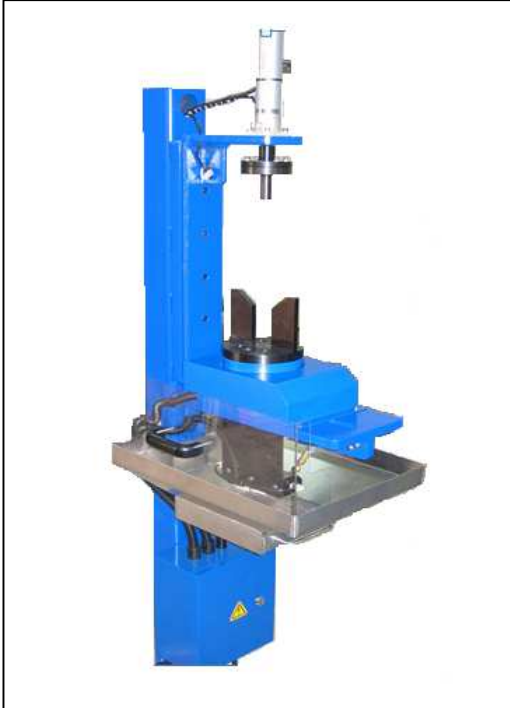
4-Axis Grinding Machine



Model	AGM-01	
Deburring Spindle	Drive	Servo
	Type	Diamond Wheel
Work Piece Holder	Rotary Table with Chuck	
Control Unit	Fanuc	
Power	AC415V, 3 phase, 50Hz	



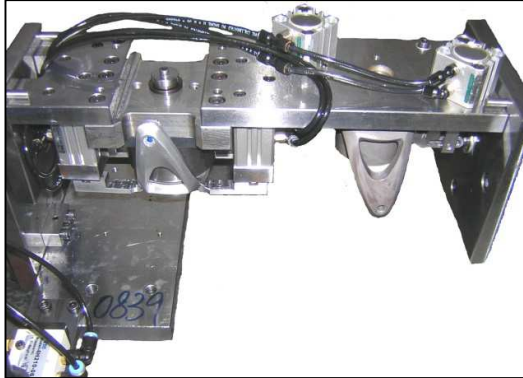
Inverting Unit



Model	ACS-01
Work Piece Holder	Rotary Table with Chuck
Pressure	5 to 6 bar
Control Unit	Siemens / Omron / Mitsubishi
Other Function	Spraying



Pneumatic Fixture



Model	APF-01
Cylinder	Toggle Clamp / Swing Clamp
Control	Multi Sequence
Pressure	5 to 6 bar

Hydraulic Fixture



Model	AHF-01
Cylinder	Toggle Clamp / Swing Clamp
Control	Multi Sequence
Pressure	100 to 300 bar



Oilmist Atomizer
(2 Mist Exits)



Model	CF-01
Supply Air Pressure	Maximum 9.9kgf/cm2
Oil Load Capacity	Max 2L (effective)
Number of Mist Exit(s)	2
Weight of Main Body	15 kg
Specification of Main Body	W160 x D175 x H350
Mist Oil Usage	2-20 cc/H

Oilmist Atomizer
(1 Mist Exit)



Model	CF-02
Supply Air Pressure	Maximum 9.9kgf/cm2
Oil Load Capacity	Max 1L (effective)
Number of Mist Exit(s)	1
Weight of Main Body	11 kg
Specification of Main Body	W160 x D175 x H350
Mist Oil Usage	2-20 cc/H



**Oilmist Atomizer
(with Additional Tank)**



Model	CP-01-TK
Supply Air Pressure	Maximum 9.9kgf/cm2
Oil Load Capacity	Max 20L
Number of Mist Exit(s)	1
Weight of Main Body	28 kg
Specification of Main Body	W255 x D262 x H825
Mist Oil Usage	10-100 cc/H

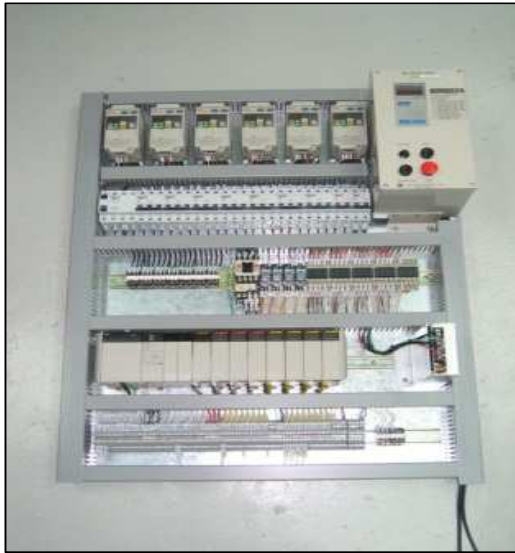
Nanomist Oil



Model	Mist Oil
Type	Vegetable Oil
Capacity	4l, 10l, 20l
Advantages	Increase tool life 1.5 ~ 3 times
	Cutting speed becomes faster over 1.5 ~ 3 times
	Fit to ISO 14001
	Not harm to human body



Controller



Model	ACP-01
Type	Programmable Logic Controller
Brand	Siemens / Omron / Panasonic / Mitsubishi
Interfacing	Input / Output / DeviceNet / Profibus

Touch Screen



Model	ATP-01
Brand	Siemens / Omron / Panasonic / Hakko / Proface
Size	5" / 8" / 10"
Screen	Colour or Monochrome

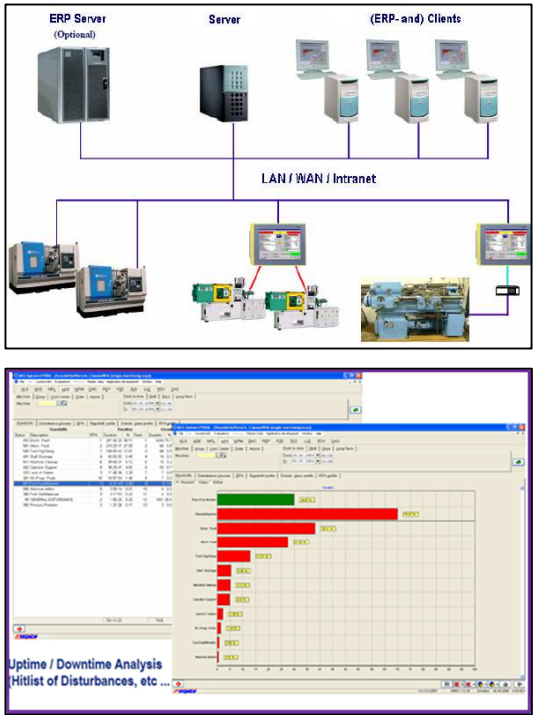


Remote Service System – RSS



Model	RSS-01
Control Unit	Siemens / Omron / Panasonic
Features	Remote Inspection & Service Remote PLC Program Modify Remote Improvement Activity
Protocol	DeviceNet / Profibus

Intelligent Management System – IMS



Model	IMS-01
Control Unit	Server & Computer
Features	Display Part Cycle Time Record Machine Machining Time Production Order Data Management Machine Data Management Shop Floor Planning Record can be prepared in Excel
Connection	LAN Cable / Wireless



Wireless Master Module



Model	VMS-MAS-V01
Control Unit	Computer
Function	Receive and Transmit Data from Wireless Module
Feature	Data will send to PC for processing through USB Port
Protocol	USB Port

Wireless Remote Module



Model	VMS-RIO-V01
Function	Plug & Play to External Peripheral
	Receive and Transmit Data from Wireless Master Module
Features	Programmable 8 Input / Output
	Configurable Analogue or Digital Signal
Protocol	RS232, RS485, USB, Micro USB



Application – Wireless System



Robot

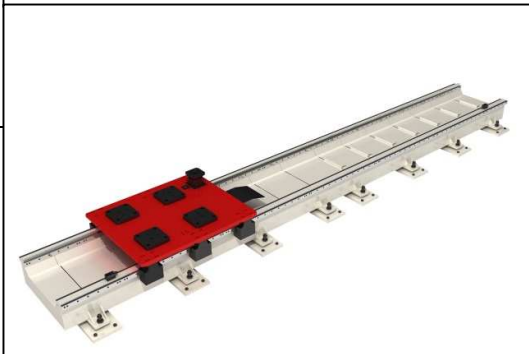


Model	ARS-01
Brand	ABB / YASKAWA / FANUC / EPSON / DENSO / KUKA / HIWIN
Load	3 kg ~ 500 kg
Envelop	0.58 m ~ 2.55 m
Gripper	Pneumatic or Hydraulic - Single or Twin Gripper
Application	Load & Unload, Polish, Debur

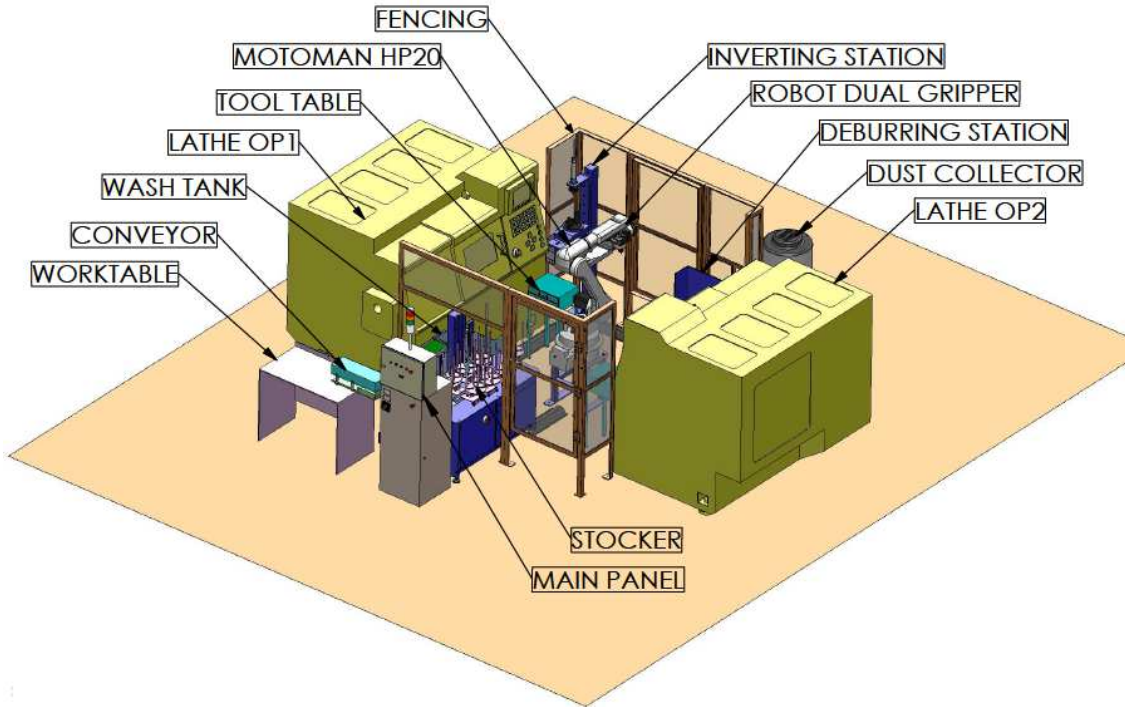
Gantry & Track Motion System



Model	OGS-01 / TMS-01
Control Unit	Siemens / Omron / Mitsubishi
Load	3 kg ~ 1000 kg
Length	5 m ~ 20 m
Gripper	Pneumatic - Single or Twin Gripper
Application	Load & Unload



Application - Robot



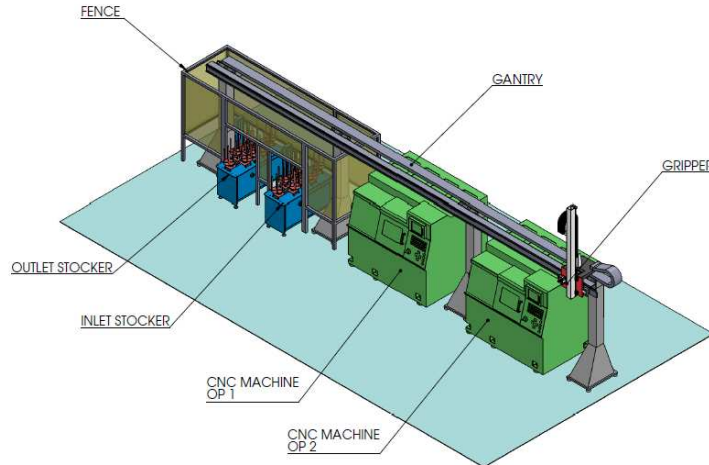
Robot Specifications

Specifications	Robot
Operations	Picking up the part from Stocker and loading it on machine and finished part will be unloaded on the Conveyor
Control Axis	6 (Vertically articulated)
Payload	5 to 20kg
Repeatability	+/- 0.05 mm
Maximum Envelope	R 1,717 mm
Gripper	Two / Three jaw internal Gripper
Robot Brand	Yaskawa, Epson, Denso, Fanuc, ABB, etc.
Power supply	200V / 50 Hz +/- 10%, +/- 0.5Hz, 2.8kVA
Control voltage	24V DC
Air pressure required by Robot system	5 bar +/- 0.5

* For higher payload, the specifications will varies. Please provide detail of part drawing and weight for more accurate specifications.



Application – Gantry & Track Motion System



Gantry & Track Motion System Specifications

Specifications	Gantry & Track Motion System
Operations	Picking up the part from Inlet Stocker and loading it on machine and finished part will be unloaded on the Outlet Stocker
Payload	5 ~ 25 kg
Gantry Stroke	
Y axis (horizontal)	10,000 ~ 50,000 mm
Z axis (vertical)	1,200 mm
Speed of Y & Z	90 m/min & 60 m/min
Acceleration Y & Z	2m/s sq.
Robot	6-Axis Robot
Construction	Timing Belt with LM Guide / V guide with Rollers, Carriage, etc.
Drive	Servo Electric & Pneumatic for Gripper
Gripper	Two / Three jaw internal Gripper
Control	Mitsubishi / Omron PLC
Power supply (voltage)	200V / 50 Hz +/- 10%, +/- 0.5Hz
Control voltage	24V DC
Air pressure required by Gantry system	5 bar +/- 0.5

* For higher payload, the specifications will varies. Please provide detail of part drawing and weight for more accurate specifications.



Our Automation Systems can Integrate with many Worldclass CNC Machines

GERMANY – DMG MORI



JAPAN - MAZAK / FANUC OKUMA / MAKINO



TAIWAN - YCM / OTHERS



Partner / Representative / Agent

HEADQUARTER:

ASTech Pte Ltd

Blk 5, Ang Mo Kio Industrial Park 2A,

#07-37, AMK Tech II,

Singapore 567760

Tel: +65 6556 2890

Fax: +65 6555 5783

E-mail: sales@astech.com.sg

Web: www.astech.com.sg

THAILAND OFFICE:

8/6 Soi. Srinakarin 63

Srinakarin Road Nongbon Prawet

Bangkok 10250

Thailand

Tel: +66 2185 6381

Fax: +66 2185 6380

Mobile: +66 8605 03631

